



Multimedia Capability.  
Cable Management.  
Security for Remote Locations.

#### FEATURES

- Flexible mounting: between studs, surface mounted, below raised floor, or directly to wall and partitions.
- Optional key lock provides security when used in remote locations.
- Attractive styling available in 2 colors - blends into any environment.
- Cable entry: top, bottom and sides.
- 5 rack units - each accepts 100-pair block or 89D bracket.

#### SPECIFICATIONS

- ◆ Enclosure material: 16 ga. cold rolled steel.  
Cover: 20 ga. cold rolled steel.
- ◆ Finish: Enclosure: Zinc Galvanized;  
Cover: Electrostatically applied powder coating.
- ◆ Dimensions: 21"H x 14.5"W x 4.5"D.

#### APPROVALS/INSTALLATION

- UL 1863 Listed.
- Rails tapped #10-24.

#### APPLICATIONS

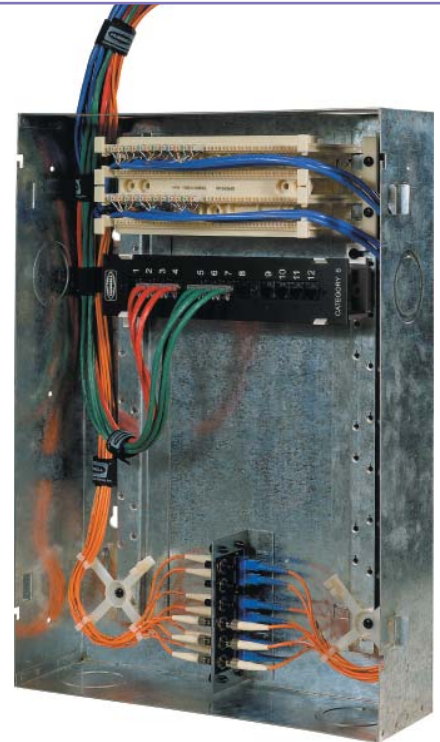
- ▲ Small Office/Home Office.
- ▲ Consolidation point for open offices.
- ▲ Small horizontal closets.

## Consolidation Point Enclosure

Mounts between studs or can be surface mounted.

Pre-threaded mounting rails accept: 110 blocks with legs, 89D brackets.

Mounting for 2 FSP or JACK-PACK® adapter panels provides for multiple fiber and copper connectors.



The Consolidation Point Enclosure provides a compact wall mount solution for small scale cross connect or consolidation point equipment. It can be flush mounted between 16" studs or surface mounted to the wall. This economical enclosure provides rack-like mounting down the center for 100-pair 110 blocks, 66 blocks, and small patch panels mounted with 89D brackets such as our 12-port blocks.

Structured cabling pathways along each side provide an engineered solution for cable entry, egress, and routing.

A mounting bracket and fiber take up spools are included to accommodate up to two Hubbell fiber FSP or JackPack™ adapter panels delivering true multimedia capability.

The attractive door can be easily removed for installation and maintenance and can be secured with an optional lock.

**Consolidation Point Enclosure**

**Order Information**

Delivery: 1 Enclosure 1 door  
 2 mounting rails 1 FSP adapter bracket  
 2 fiber routing spools  
 4 wall mounting screws (#8-32 x 3/4" wood screws)  
 20 internal equipment mounting screws (#10-24 x 3/8" pan head Phillips)

Color	Height	Width	Depth	Catalog No.
Electrical Ivory	21" (533)	14.5" (368)	4.5" (114)	<b>CPEI</b>
Black	21" (533)	14.5" (368)	4.5" (114)	<b>CPEB</b>



**Consolidation Point Enclosure - Accessories**

**Order Information**

**Louvered Cover**

Delivery: 1 louvered cover.  
 Material: 20 gauge cold rolled steel.  
 Finish: Electrostatically applied powder coating.

Color	Catalog No.	Color	Catalog No.
Electrical Ivory	<b>CPKLDI</b>	Black	<b>CPKLDB</b>

**Trim Ring**

Delivery: 1 trim ring.

Color	Catalog No.	Color	Catalog No.
Electrical Ivory	<b>CPKTRI</b>	Black	<b>CPKTRB</b>



CPKLDI



CPKTRI

**Lock Kit**

Catalog No.	<b>FLOCK1</b>
-------------	---------------



FLOCK1



**Hubbell Premise Wiring**

HUBBELL INCORPORATED (Delaware)  
 14 Lord's Hill Road • Stonington, CT 06378-0901 • (860) 535-8326 • 800-626-0005  
 Fax: (860) 535-8328 • Internet site: <http://www.hubbell-premise.com>

**Worldwide Locations**

Hubbell Premise Wiring, Asia Pacific	852-2836-7131	Fax: 852-2836-7132	Hubbell Premise Wiring, Latin America	305-408-4501	Fax: 305-408-8201
Hubbell Canada Inc.	905-839-1138	Fax: 905-839-9108	Hubbell de Mexico, S.A. de C.V.	(5255) 9151-9999	Fax: (5255) 9151-9989
Hubbell Premise Wiring, Central America	506-309-4158	Fax: 506-260-1616	Hubbell Premise Wiring, Middle East	971-4-393-4192	Fax: 971-4-393-4194
Hubbell Premise Wiring, China	8621-6309-0119	Fax: 8621-6309-0122	Hubbell-Taian Co., Ltd., Taiwan	886-2-2522-1862	Fax: 886-2-2522-1872
Hubbell Premise Wiring, Colombia	571-245-8940	Fax: 571-340-0925	Hubbell Premise Wiring, Turkey	90-216-313-5016	Fax: 90-216-414-8148
Hubbell Premise Wiring, Europe	44-01283 500500	Fax: 44-01283 500400	Hubbell Premise Wiring, Venezuela	58-416-680-7453	Fax: 58-281-274-7900
Hubbell Int'l. Inc., Korea Branch	82-2-(0)2607-1363	Fax: 82-2-(0)2603-7386			