



Ideal for Multimedia Applications:
Category 6A, 6, 5e, 3, Audio/
Video and Fiber Optic.

Accepts **XCELERATOR™**
Category 6A, 6, 5e, 3, and
USOC Jacks.

Centered Port Identification Allows
for Greater Visibility of Labels and
Clean Patch Cord Organization.

FEATURES

- Rolled edge construction provides superior strength during termination.
- Panels feature a rear or front loading design that simplifies installation, allowing for quick additions or changes.
- 1-Punch jack termination.
- XCELERATOR™ jacks are available in 13 different colors for distinctive color-coding.
- Rack or wall mount panel versions available.

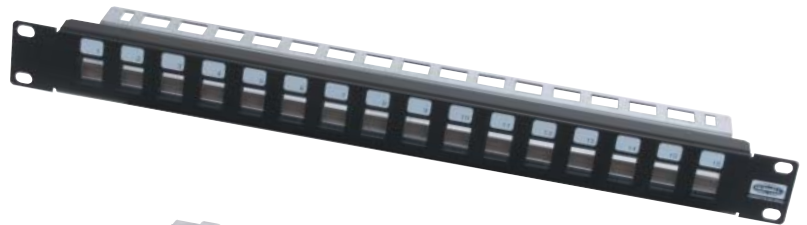
SPECIFICATIONS

- ◆ Material: 16 ga. cold rolled steel.
- ◆ Compatible with Hubbell XCELERATOR™ jacks: Category 6A, 6, 5e, 3, and USOC.
- ◆ Compatible with Hubbell Labeling Solution.
- ◆ Panels comply with EIA-310-D rack mount standards.

STANDARDS/LISTINGS/VERIFICATIONS

- UL and cUL listed.

UDX Multimedia Panels



UDX16E for rack mount applications.



UDX1289 for wall mount applications.

The UDX Multimedia Panels are field-configurable with any combination of **XCELERATOR™** jacks, fiber optic keystone adapters, and Audio/Video connectors. These high-density panels maximize limited rack space. The 36-port 1U panel provides significant space savings in cabinets and racks.

Additionally, the UDX panels will be useful where add-as-you-go flexibility, changeability, mixed jack performance, and color-coding are desired. The flexibility in category system performance and color options of the XCELERATOR™ modular jacks provides the ability to configure the patch panel for any size installation and add jacks as the network expands.

Best of all, the new and unique Hubbell 1-Punch tool (sold separately) provides for a significant labor savings by consistently terminating and cutting off all four pairs of conductors in "1-PUNCH", slashing jack termination time 70%.

ORDERING INFORMATION

UDX Multimedia Jack Panels, Unloaded

Order Information

Style	Height	Port Size	Jacks Supplied	Color	Catalog No.
Wall Mount	-	12	Unloaded	Black	UDX1289*
Rack Mount	1U (1.75")	16	Unloaded	Black	UDX16E
Rack Mount	1U (1.75")	24	Unloaded	Black	UDX24E
Rack Mount	1U (1.75")	36	Unloaded	Black	UDX36E
Rack Mount	2U (3.50")	48	Unloaded	Black	UDX48E



* Pre-mounted on an 89D bracket.

ACCESSORIES

XCELERATOR™ Jacks, Category 6 and 5e

	Catalog No.
Category 5e	HXJ5EXX
Category 6	HXJ6XX

XX = Color:

- 'AL' = Almond
- 'B' = Blue
- 'BK' = Black
- 'EI' = Electric Ivory
- 'GL25' = Gold*
- 'GY' = Gray
- 'GN' = Green
- 'OW' = Office White
- 'OR' = Orange
- 'P25' = Purple*
- 'R' = Red
- 'TI' = Telco Ivory
- 'W' = White
- 'Y' = Yellow

* 25-packs only.



UTP Cable, SPEEDGAIN® Category 5E, 4-Pair

Color	Catalog No. Riser		Catalog No. Plenum	
	Spool	REELEX*	Spool	REELEX*
Blue	C5EPSRB	C5EPRRB	C5EPSPB	C5EPRPB
Gray	C5EPSRGY	C5EPRRGY	C5EPSPGY	C5EPRPGY
White	C5EPSRW	C5EPRRW	C5EPSPW	C5EPRPW
Yellow	C5EPSRY	C5EPRRY	C5EPSPY	C5EPRPY

* REELEX is licensed and patented by Windings Inc.

Patch Cords, Category 6 and 5e

	Catalog No.
Category 5e	PCX5EXX*
Category 6	PCX6XX**

XX = Standard Color:

- 'B' = Blue; 'BK' = Black;
- 'GY' = Gray; 'Y' = Yellow

For other colors replace color designation with one of the following:
OR = Orange, R = Red, GN = Green, P = Purple, W = White

- * = Standard Length: '01'=1'; '03'=3'; '05'=5'; '07'=7'; '10'=10'; '15'=15'; '20'=20'; '25'=25'; '30'=30'; '35'=35'; '40'=40'; '45'=45'; '50'=50'; '55'=55'; '60'=60'; '75'=75'; '100'=100'
- ** = Standard Length: '03' = 3'; '06' = 6'; '08' = 8'; '10' = 10'; '12' = 12'; '16' = 16'; '20' = 20'



UTP Cable, NEXTSPEED® Category 6, 4-Pair

Color	Catalog No. Riser		Catalog No. Plenum	
	Spool	REELEX*	Spool	REELEX*
Blue	C6SRB	C6RRB	C6SPB	C6RPB
Gray	C6SRGY	C6RRGY	C6SPGY	C6RPGY
White	C6SRW	C6RRW	C6SPW	C6RPW
Yellow	C6SRY	C6RRY	C6SPY	C6RPY

* REELEX is licensed and patented by Windings Inc.

UTP Cable, NEXTSPEED® Ascent 10GbE, 4-Pair

Color	Catalog No. Riser		Catalog No. Plenum	
	Spool	Spool	Spool	Spool
Blue	C6ASRB	C6ASPB	C6ASPB	C6ASPB
Gray	C6ASRGY	C6ASPGY	C6ASPGY	C6ASPGY
White	C6ASRW	C6ASPW	C6ASPW	C6ASPW
Yellow	C6ASRY	C6ASPY	C6ASPY	C6ASPY

Rear Cable Management Bars

Description	Catalog No.
Clips to rear of panels	PCBLMGT
Screws to rear flange of 19" rack	MCCSWB19



Hubbell Premise Wiring

HUBBELL INCORPORATED (Delaware)
14 Lord's Hill Road • Stonington, CT 06378-0901 • (860) 535-8326 • 800-626-0005
Fax: (860) 535-8328 • Internet site: <http://www.hubbell-premise.com>

Worldwide Locations

Hubbell Premise Wiring, Asia Pacific	852-2836-7131	Fax: 852-2836-7132	Hubbell Premise Wiring, Latin America	305-408-4501	Fax: 305-408-8201
Hubbell Canada Inc.	905-839-1138	Fax: 905-839-9108	Hubbell de Mexico, S.A. de C.V.	(5255) 9151-9999	Fax: (5255) 9151-9989
Hubbell Premise Wiring, Central America	506-309-4158	Fax: 506-260-1616	Hubbell Premise Wiring, Middle East	971-4-393-4192	Fax: 971-4-393-4194
Hubbell Premise Wiring, China	8621-6309-0119	Fax: 8621-6309-0122	Hubbell-Taian Co., Ltd., Taiwan	886-2-2522-1862	Fax: 886-2-2522-1872
Hubbell Premise Wiring, Colombia	571-245-8940	Fax: 571-340-0925	Hubbell Premise Wiring, Turkey	90-216-313-5016	Fax: 90-216-414-8148
Hubbell Premise Wiring, Europe	44-01283 500500	Fax: 44-01283 500400	Hubbell Premise Wiring, Venezuela	58-416-680-7453	Fax: 58-281-274-7900
Hubbell Int'l. Inc., Korea Branch	82-2-(0)2607-1363	Fax: 82-2-(0)2603-7386			