



HUBBELL **ASCENT** Shielded
NEXTSPEED Category 6A Jack

- Exceeds Category 6A Component Performance
- Short Links (Less than 10M) Supported
- Qualified to 150% of 802.3bt PoE Current Level
- Continuous Third Party Verification Program

FEATURES

- Enhanced common mode design eliminates residual and reflected NEXT and ANEXT
- Exceeds TIA 568-C.2 and ISO/IEC 11801 component requirements
- Zero bit-error channel performance
- Superior EMI and ANEXT Suppression
- Quick and easy grounding
- Designed and tested for 1.5A of continuous current per pair
- Manufacturing: 100% factory tested
- Universal Wiring (T568A or T568B)
- Integrated icon slots for 606-B compliance
- Backward compatible to Category 5e, 6

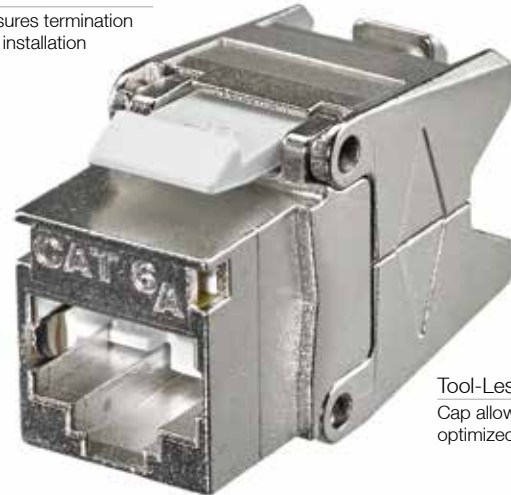
SPECIFICATIONS

- Mating cycles: min. 750
- Shielding housing: solid zinc die-cast

STANDARDS

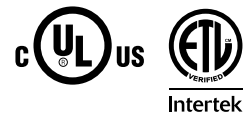
- TIA-568-C.2 Category 6A component
- ISO 11801 and IEC 60603-7-41 6A component
- Third party tested for TIA 568-C.2 and ISO/IEC 11801 Class E_A requirements, component/link/channel
- Mechanical: Verified to TIA-568-C.2
- UL Listed 1863, UL 94 V-0 Flammability Rating
- ISO 9001-2008 Manufacturing Process
- ISO/IEC 11801 and EN 50173 second edition requirements for transfer impedance and shield effectiveness

Superior Strain Relief
Locking cap ensures termination retention during installation



Performance
100% factory tested in a controlled environment

Tool-Less Termination
Cap allows cable to maintain optimized performance



Ascent Shielded Category 6A is a tuned system of structured cabling components designed and balanced to work together to deliver Category 6A performance and headroom beyond 500MHz. Ascent shielded provides the highest level of reliability in the industry with added protection against ANEXT, external noise and EMI.

Ascent Shielded Category 6A system delivers headroom over the all TIA and ISO performance requirements eliminating the need for AXT testing.

The Ascent shielded system provides a transparent 10 Gigabit signal path for current and future applications and trends, decreasing installation time and supplying the peace of mind needed for present data intensive applications.

APPLICATIONS

- IEEE 802.3an 10GBASE-T
- IEEE 802.3bt 4PPoE Power over Ethernet
- Suitable for links 2-90M
- IEEE 802.11ac and IEEE 802.11ax WAP deployments
- Backward compatible with Cat 5e and 6 hardware and applications





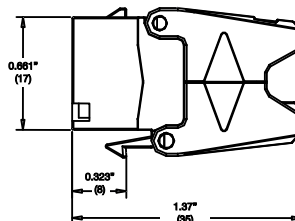
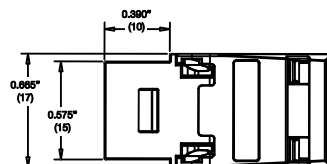
ORDERING INFORMATION

NEXTSPEED® Ascent Shielded Jacks, Category 6A

| | |
|-----------------|---------------|
| Unit of Measure | Catalog No. |
| Single Pack | SJ6A |
| 24-pack | SJ6A24 |



DIMENSIONS



RELATED PRODUCT

UDX-Series Shielded Patch Panels

| Ports | Height | Rack Units | Standard | Angled |
|-------|------------|------------|-----------------|-----------------|
| 24 | 1.75" (45) | 1 | PSJ24BK2 | PSJ24AU2 |
| 48 | 3.50" (89) | 2 | PSJ48BK2 | PSJ48AU2 |



Note: Order jacks separately

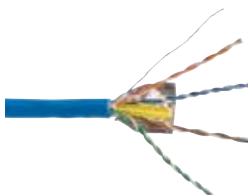
Ascent Category 6A Patch Cords

| Length | Catalog No. | Length | Catalog No. |
|--------|-----------------|-----------------------------------|-----------------|
| 3' | PC6Axx03 | 15' | PC6Axx15 |
| 5' | PC6Axx05 | 20' | PC6Axx20 |
| 7' | PC6Axx07 | 25' | PC6Axx25 |
| 10' | PC6Axx10 | <i>xx= Color: B=Blue, GY=Gray</i> | |



Ascent Category 6A FTP, 4-Pair Cable

| Color | Plenum Spool (1000' Length) | Riser Spool (1000' Length) |
|-------|-----------------------------|----------------------------|
| Blue | C6AFTPSPB | C6AFTPSRB |
| Gray | C6AFTPSPGY | C6AFTPSRGY |
| White | C6AFTPSPW | C6AFTPSRW |



Assemblies

BIDnet™ pre-terminated Category 6A Copper Trunk Assemblies are the ideal solution for data centers, open office and other applications where accuracy, reliability and performance are the most important factors. BIDnet™ assemblies provide a simple plug-n-play solution for permanent links between switches, servers and patch panels. All BIDnet™ pre-terminated cable assemblies are made-to-order items. Please call our Inside Sales team for lead-time, pricing and availability.



INTEGRATED SOLUTIONS



Work Station & Cross-Connect Solutions

- All Hubbell iSTATION Products, Front-Loading, Rear-Loading, Frames, Bezels and Surface Mount Boxes
- All UDX Multimedia Panels



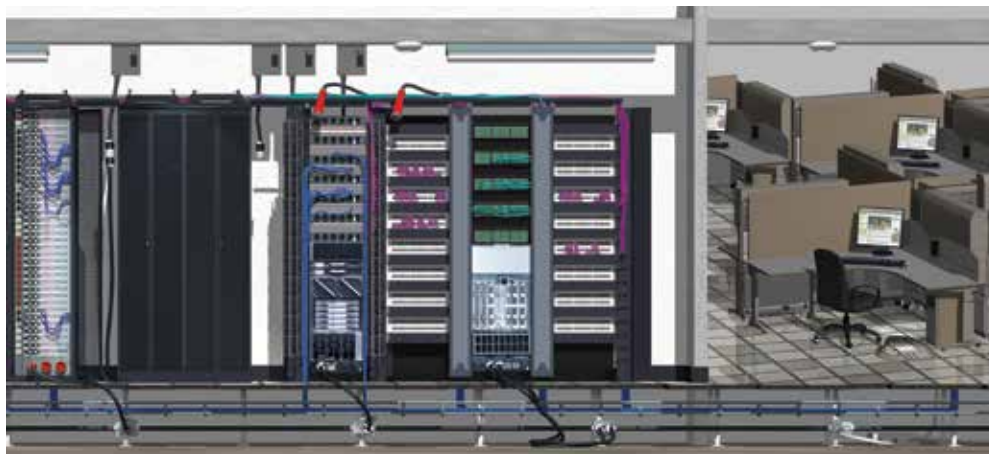
Delivery Systems Solutions

- Hubbell SystemOne Poke-Throughs, Concrete and Raised Access Floor Boxes
- Multi-Connect Wall Boxes and Conference Table Boxes
- Metal and Non-Metallic Raceway

TYPICAL APPLICATION

Cat 6A - 10 Gigabit Ethernet has become the standard for connecting active gear in data centers.

BIDnet™ Cat 6A assemblies provide simplicity between switches, servers and patch panels



Cat 6A delivers high performance computing (HPC) to the desktop.