



4PPoE Application Assurance up to 100W

1 Gigabit Ethernet Performance

UL LP Listed

UL Certified Environmental Product Declaration (EPD)

SPECIFICATIONS

- ◆ **Conductor:** 22 AWG solid bare copper
- ◆ **Insulation:** CMP: FEP, CMR: Polyolefin
- ◆ **Pairing**
 - 1: Light Blue/Blue
 - 2: Light Orange/Orange
 - 3: Light Green/Green
 - 4: Light Brown/Brown
- ◆ **Jacket**
 - CMP and CMP-LP: 0.6A, FR, low-smoke PVC
 - CMR and CMR-LP: 0.5A, FR PVC
- ◆ **NVP% (Nominal)**
 - CMP: 74
 - CMR: 71

STANDARDS/VERIFICATIONS

- ANSI/TIA-568-C.2 and ISO/IEC 11801 component compliance
- IEEE 802.3af (PoE), IEEE 802.3at (PoE+), IEEE 802.3bt (4PPoE Type 3 and 4)
- 10BASE-T through 1000BASE-T
- NEC Article 800 compliant
- Third party verified
- UL/c(UL) Listed, LP Listed for product safety in high heat/high power PoE applications
- HDBaseT Certified, Class A and B
- RoHS/RoHS 2 compliant
- REACH compliant

HUBBELL NEXTPOWER Category 5e Limited Power 4PPoE Cable

Performance tested to 350MHz

Tested to 100W

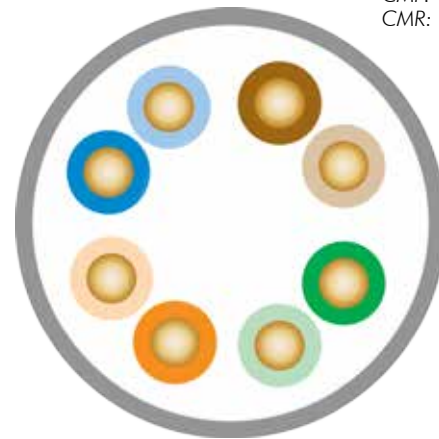
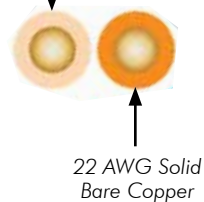


Easy to pull, standard, round jacketed cable

Hubbell's NEXTPOWER Category 5e LP cable provides optimal performance for supporting 4 Pair Power over Ethernet (4PPoE) applications requiring up to 100W of power. This unique cable design offers superior energy efficiency compared to standard category 5e cables and limits temperature rise. This cable is fully compliant with the latest TIA and ISO/IEC component specification ensuring full compliance for 1000BASE-T Ethernet speeds.

CABLE FEATURES

Primary Insulation
CMP: FEP
CMR: Polyolefin

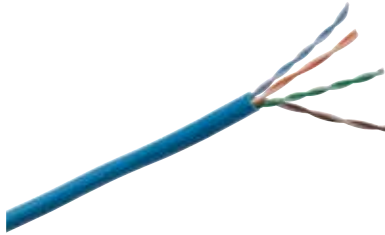


Nominal Cable O.D.
CMP: 0.23"
CMR: 0.23"

APPLICATIONS

- ▲ 1 GbE performance/high-power PoE applications
- ▲ PoE IEEE 802.3af, PoE+ IEEE 802.3at Type 1 and 2, 4PPoE IEEE 802.3bt Type 3 and 4 draft D1.2
- ▲ HDBaseT certified

ORDERING INFORMATION



NEXTPOWER Category 5e 4PPoE Cable

4-pair; NVP: Plenum 74%, Riser 71%

Color	REELEX® Plenum Spool	REELEX® Riser Spool
Blue	C5ELPPB	C5ELPRB
Violet	C5ELPPV	C5ELPRV
White	C5ELPPW	C5ELPRW
Yellow	C5ELPPY	C5ELPRY

RELATED PRODUCTS

NEXTSPEED® Category 5e Jacks

Color	Catalog No.	Color	Catalog No.
Black	HXJ5EBK	Office White	HXJ5EOW
Blue	HXJ5EB	Purple	HXJ5EP25*
Gold	HXJ5EGL25*	Red	HXJ5ER
Gray	HXJ5EGY	White	HXJ5EW
Green	HXJ5EGN	Yellow	HXJ5EY

Note: Add **25** to Catalog Number for 25-pack.

*Gold and Purple available in 25-pack only.

NEXTSPEED® Category 5e Patch Panels, 19"

Format	Color	24-Port, 1RU	48-Port, 2RU
Standard	Black	HP5E24	HP5E48
Standard	White	HP5E24W	HP5E48W
Angled	Black	HP5E24A*	HP5E48A*

*Angled panels protrude 4.46" from the plane of the rack. One extra inch of space is recommended between the door and panel angle.

Jack Patch Panels, Unloaded, 19"

Format	24-Port, 1RU	48-Port, 2RU	72-Port, 3RU	High-Density, 48-Port, 1RU
Standard	HPJ24	HPJ48	HPJ72	UDX48E1U
Angled	HPJ24A	HPJ48A	-	UDX48A1U

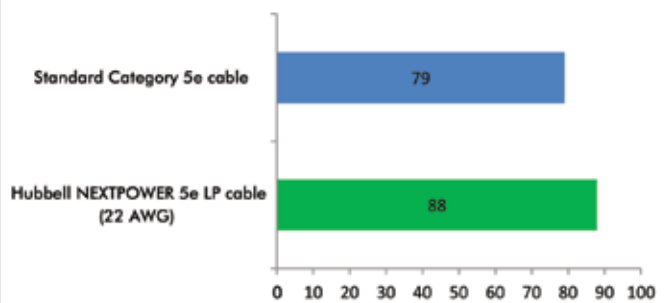
NEXTSPEED® Category 5e Patch Cords

Color	Catalog No.	Color	Catalog No.
Black	HC5EBKyy	Purple	HC5EPyy
Blue	HC5EByy	Red	HC5ERYy
Gray	HC5EGYyy	White	HC5EWyy
Green	HC5EGNyy	Yellow	HC5EYyy
Orange	HC5EORyy		

yy = Standard Length: **01** (1'), **03** (3'), **05** (5'), **07** (7'), **10** (10'), **15** (15'), **20** (20'). Made-to-order lengths are available from 25ft to 100ft in 5ft increments.

Power Efficiency % Comparison

100m Length



Maximum Temperature Rise °C

100 Cable Bundle

