

NEXTSPEED
Category 6 Component

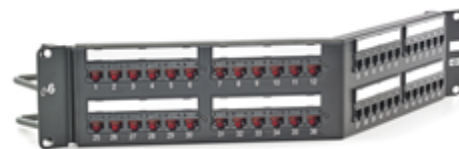
HUBBELL



Patch Panel

Features

- 4 dB min NEXT Margin 1 -250 MHz over TIA and ISO Channel Specifications
- Qualified to 150% of 802.3bt PoE Current Level
- Continuous Third Party Verification Program



Ordering Information

Description	Color	Catalog Number	UPC
NEXTSPEED Category 6 Angled Patch Panel, 48-port, 2 Rack Units	Black	HP648A	662620247243

Listings

TIA-568-C.2 Category 6 component
 ISO/IEC 11801/60603-7-41 6 component
 Third Party tested for TIA 568-C.2 requirements. Component/link/channel Category 6 and ISO/IEC 11801 Class E
 Mechanical: Verified to TIA-568-C.2
 UL Listed 1863, UL 94 V-0 Flammability Rating ISO9001-2008 manufacturing process

Specifications

Nose Contact	Beryllium copper with precious metal plating with nickel under-plating
Rear IDC Contact	Phosphor bronze with 100 micro-inch lead free tin plating over nickel under plating
Panel Material	14 ga. Steel rolled-edge construction
Dimensions (W x H) Inch (mm)	19 (483) x 3.50 (89)
Mounting	Dimensions and mounting holes per CEA-310-E

Performance

Electrical

NEXT margin over TIA 568 -C.2 and ISO 11801 Class E channel specifications 1-250MHz
 Exceeds component requirements of TIA-568-C.2 Category 6 and IEC Category 6 components
 Designed and tested for 1.5A of continuous current per pair

General Information

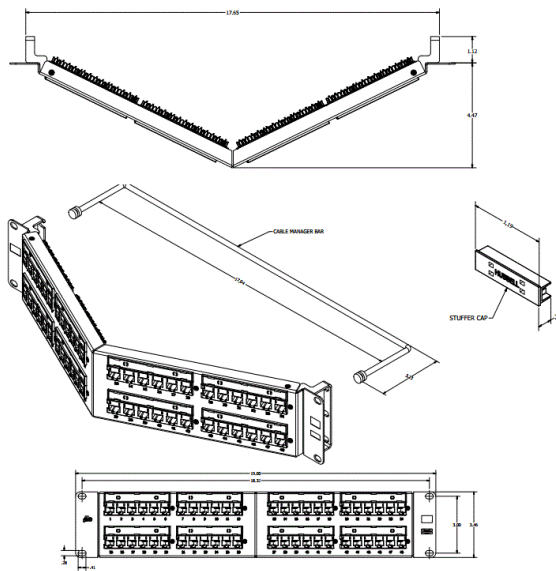
Manufacturing: 100% factory tested
 Universal wiring (T568A or T568B)
 Integrated labeling and icon slots for 606-B compliance

Mechanical

Mating Cycle: 2000+ with FCC 8-position plug

Applications

IEEE 802.3b 100GBASE-T
 IEEE 802.3bt PoE+
 IEEE 802.3bt 4PPoE Power over Ethernet
 TIA TSB-155 10GbE Over 55 Meters
 Backwards compatible with Category 5E hardware and applications



Accessories

Category 6 Component Jack	HXJ6B
Category 6 Patch Cord	HC6B03
Category 6 Panel Replacement Adaptor	HP6M6
Category 6 UTP Cable	C6SRB

Online Resources

Customer Use Drawing
 eCatalog